

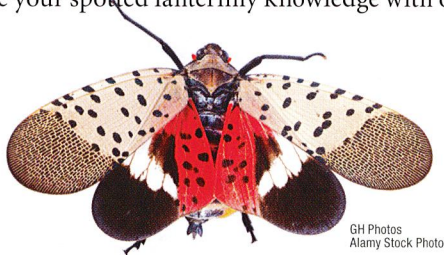


## Report a Sighting

1. Check whether you're inside or outside the quarantine zone by visiting [extension.psu.edu/spotted-lanternfly](http://extension.psu.edu/spotted-lanternfly).
2. Kill and collect the specimen by freezing it or placing it permanently in rubbing alcohol. If you are able, take a picture of it.
3. Report the sighting online at [extension.psu.edu/spotted-lanternfly](http://extension.psu.edu/spotted-lanternfly). If you cannot access the internet, call **888-4-BADFLY** (888-422-3359) toll-free. Please only use this hotline for sightings outside the quarantine zone.

## Stop the Spread

1. Destroy all life stages of spotted lanternfly that you find.
2. Check your car and outdoor equipment for spotted lanternfly eggs, nymphs, and adults before moving within or out of the quarantine zone. Don't move firewood.
3. Share your spotted lanternfly knowledge with others!



GH Photos  
Alamy Stock Photo



PennState Extension



This publication was produced by Penn State Extension in collaboration with the Pennsylvania Department of Agriculture and the United States Department of Agriculture.

## [extension.psu.edu](http://extension.psu.edu)

Penn State College of Agricultural Sciences research and extension programs are funded in part by Pennsylvania counties, the Commonwealth of Pennsylvania, and the U.S. Department of Agriculture.

**This publication is available in alternative media on request.**

Penn State is an equal opportunity, affirmative action employer, and is committed to providing employment opportunities to all qualified applicants without regard to race, color, religion, age, sex, sexual orientation, gender identity, national origin, disability, or protected veteran status.

© The Pennsylvania State University 2021

Code EE0228 Rev30M04/21mpc

## Stop This Invader!



## Spotted Lanternfly

Erica Smyers

## What Is It?

The spotted lanternfly is an invasive insect from Asia currently found in southeastern Pennsylvania, and sightings have been reported in some neighboring states.

The pest threatens important agricultural commodities, including the grape, hardwood, tree fruit, landscape, and nursery industries—sectors that contribute nearly \$18 billion annually to Pennsylvania's economy.

This planthopper weakens plants by feeding on sap. It excretes a sugary substance called honeydew, which attracts stinging insects, promotes the growth of sooty mold, and causes a messy nuisance for residents.

To help stop the spread of spotted lanternfly, the state has issued a quarantine order requiring the inspection of all items moving within or out of the area to prevent the transport of any living life stage of the pest.



Erica Smyers

## See it? Report it!

[extension.psu.edu/spotted-lanternfly](http://extension.psu.edu/spotted-lanternfly)



## Know What to Look For

Spotted lanternfly adults are about 1 inch long and a half inch wide with wings folded.

Nymphs are  $\frac{1}{8}$  to  $\frac{1}{2}$  inch long and develop through four stages, all of which are wingless.

Egg masses have a gray, mud-like covering, which can become dry and cracked over time. Older egg masses may lose their covering and appear as columns of 30–50 seed-like eggs. Egg masses can be found on trees, rocks, and other surfaces.

### A. Egg mass, fresh

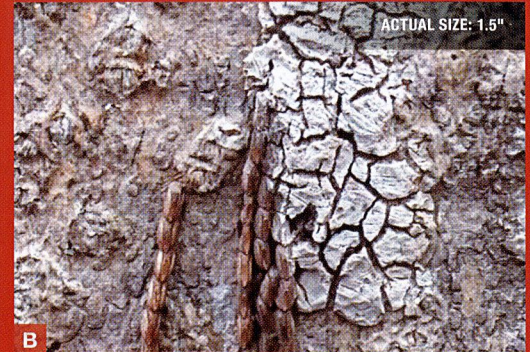


A

PA Department of Agriculture

### B. Egg mass, older

*Can be found September through June*



B

Emelle Swackhamer

### C. Nymph, early stage

*Can be found late April through July*

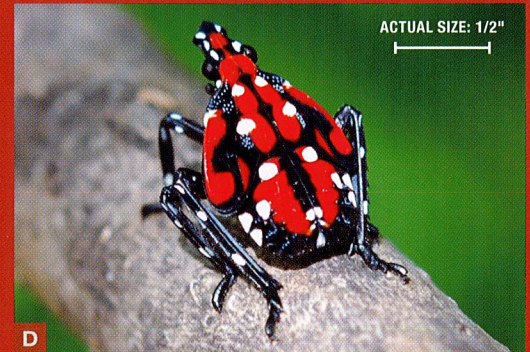


C

PA Department of Agriculture

### D. Nymph, late stage

*Can be found July through September*



D

PA Department of Agriculture

### E. Adult, wings closed

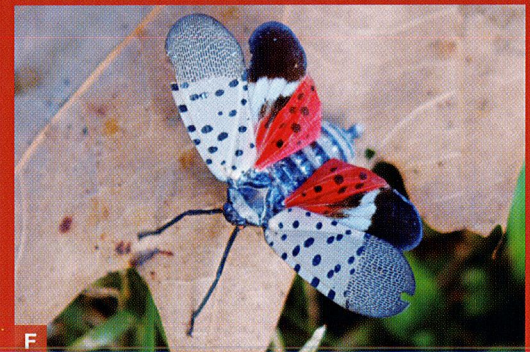
### F. Adult, wings open

*Can be found July through December*



E

PA Department of Agriculture



F

PA Department of Agriculture

Learn more at [extension.psu.edu/spotted-lanternfly](https://extension.psu.edu/spotted-lanternfly)